

Q2 | 2024

EASTERN EUROPE, TURKIYE



ELS USA LANGUAGE CENTERS

2024 PRICES, DATES, AND TERMS & CONDITIONS



Information correct at time of publication and is subject to change without notice. The availability of programs is subject to student enrollment.

UPDATED APRIL 1, 2024





PROMOTION HIGHLIGHTS FOR QUARTER 2

TUITION PROMOS

SAVE 20% OFF

**TUITION FOR
ALL ELS CENTERS**

A graphic featuring a red banner with 'SAVE 20% OFF' and a yellow banner with 'TUITION FOR ALL ELS CENTERS'.

PROMOS ON OTHER FEES



Free Facilities Fee



Free application fee on bookings
of 4 weeks or more of ELS studies

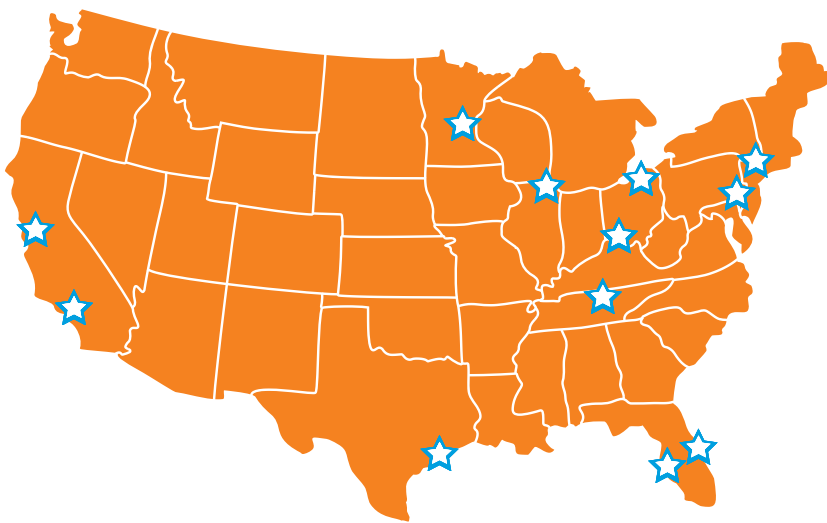


50% off Materials and
Technology weekly fee



ELS LANGUAGE CENTERS

CHOOSE FROM 12 AMAZING ON-CAMPUS AMERICAN DESTINATIONS



ELS CHICAGO

on the campus of Dominican University

ELS CINCINNATI

on the campus of University of Cincinnati

ELS CLEVELAND

on the campus of Case Western Reserve University

ELS HOUSTON

affiliated with University of St. Thomas - Houston

ELS LOS ANGELES COUNTY

on the campus of University of La Verne

ELS MELBOURNE

on the campus of Florida Institute of Technology

ELS NASHVILLE

on the campus of Middle Tennessee State University

ELS N.Y., MANHATTAN

on the campus of New York Institute of Technology

ELS PHILADELPHIA

on the campus of Saint Joseph's University

ELS SAN FRANCISCO, NORTH BAY

on the campus of Dominican University of California

ELS ST. PAUL

on the campus of University of St. Thomas - Minnesota

ELS ST. PETERSBURG

on the campus of Eckerd College



OVER 1.2 MILLION STUDENTS HAVE CHOSEN ELS... HERE'S WHY!



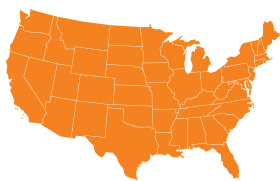
ACADEMIC EXCELLENCE

- The most effective way to prepare for career and academic success.
- Over 600 university and college partners across the USA accept ELS as proof of English proficiency.
- A teaching methodology that works – over 40,000 students have matriculated to university.
- More than 1.2 million students from over 140 countries have learned English with ELS.



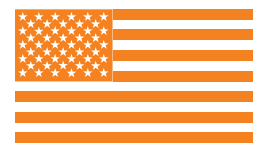
SUPPORTIVE AND SAFE

- Academic advice and assistance in applying to university.
- Teaching staff that support you every step of the way.
- Safe, supportive learning environments.



AMAZING AMERICAN DESTINATIONS

- 13 unique locations across the USA.
- University campus-based learning experience.
- Experience the diverse landscapes and cultures that America has to offer.



AN AMERICAN CULTURAL EXPERIENCE

- Full English language immersion from arrival day.
- Discover an American University experience at our campus-based centers.





EASTERN EUROPE, TURKIYE 2024 PRICING

Fees valid for applications received between **Apr 1** and **Jun 30, 2024** for any start date.

All fees are in American Dollars (USD). The availability of programs is subject to student enrollment.

GENERAL FEES ALL LOCATIONS

APPLICATION FEE, ONE TIME, NON-REFUNDABLE	\$180*
MATERIALS & TECHNOLOGY FEE (PER WEEK)	\$13.75 (\$27.50)
STUDENT HEALTH INSURANCE (PER WEEK)***	\$50
FACILITY FEE (PER WEEK)	FREE (\$15)

*Book **4 weeks or more** of ELS studies and **get waived application fee.**

**Students must be covered by health insurance for the duration of their studies and have the option to enroll in ELS' health insurance plan.

TUITION FOR ALL ELS CENTERS



TUITION PRICES	1-11 WEEKS (per week)	12-23 WEEKS (per week)	24+ WEEKS (per week)
Intensive English* (30 lessons/week)	\$440 (\$550)	\$412 (\$515)	\$388 (\$485)
Semi-Intensive English* (20 lessons/week)	\$340 (\$425)	\$320 (\$400)	\$300 (\$375)
American Explorer** (15 lessons/week)	\$328 (\$410)	\$308 (\$385)	--

*In order to issue an I-20 for an F-1 student visa, students must register for a minimum of 4 weeks of Semi-Intensive or Intensive English.

**The American Explorer program is available for registrations up to a maximum of 12 weeks.



PLANNING TO STUDY AT ELS HOUSTON?

ELS

WE'RE OFFERING SPECIAL RATES FOR THE KIMPTON APARTMENTS STUDENT RESIDENCE FOR STAYS BETWEEN APRIL 21ST TO SEPTEMBER 7TH, 2024!

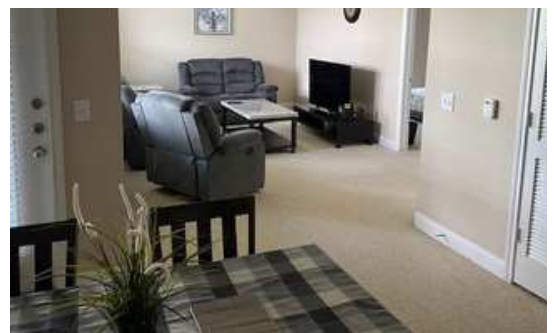
\$800 TWIN ROOM (SHARED)
per 4-week session
~~\$1,160~~

\$1600 TWIN ROOM (SINGLE*)
Enjoy the whole room to yourself
per 4-week session
~~\$2320~~

**this option is not normally available and cannot be extended beyond the qualifying period stated above.*

Terms & Conditions:

1. Valid on official session start dates, only, for full session blocks (4, 8, 12, 16 weeks); arrivals in weeks 2, 3 or 4 will be charged at standard rates; 3-week booking will also be charged at standard rates, even if starting on an official session start date.
2. Available for valid, new applications only.
3. If a student's stay extends beyond September 7th, 2024, additional weeks will be charged at the standard rate.



NEED MORE INFORMATION ON THE RESIDENCE?
WWW.ELS.EDU/DESTINATIONS/HOUSTON

ELS



2024 HOUSING PRICES

2024 homestay fees are valid for applications received between **Jan 1 and Dec 31, 2024** for **arrivals in 2024**, but are subject to change at any time.

2024 on and off campus student residence fees are valid for applications received between **Jan 1, 2024 and Dec 31, 2024** for **arrivals until the end of 2024**, but are subject to change at any time.

All fees are in American Dollars (USD). The availability of programs is subject to student enrollment.

	HOUSING TYPE	PRICE* (per week)	OPTIONAL AIRPORT PICK-UP (Each way)
ELS CHICAGO	Homestay	\$370 14 meals per week (breakfast and dinner)	ORD - Chicago O'Hare International Airport \$175
	Chicago Student Residence (Off Campus)	\$400 Double occupancy (minimum booking 4 weeks)	
ELS CINCINNATI	Homestay	\$335 14 meals per week (breakfast and dinner)	CVG - Cincinnati/Northern Kentucky International Airport \$165
	University of Cincinnati Campus Residences (On Campus)	\$385 Double occupancy	
ELS CLEVELAND	Cleveland Student Residence (Off Campus)	\$325 Single occupancy	CLE - Cleveland Hopkins International Airport \$150
ELS HOUSTON	Homestay	\$370 14 meals per week (breakfast and dinner)	HOU - William P. Hobby Airport IAH - George Bush Intercontinental Airport \$190
	Houston Student Residence (Off Campus)	\$290 Double occupancy	
ELS LOS ANGELES COUNTY	Homestay	\$350 14 meals per week (breakfast and dinner)	LAX - Los Angeles International Airport \$370
	University of La Verne Campus Residences (On Campus)	\$475 Double occupancy 7 meals per week (1 meal per day - breakfast, lunch, OR dinner)	
ELS MELBOURNE	Homestay	\$360 14 meals per week (breakfast and dinner)	MCO - Orlando International Airport \$235
	Florida Institute of Technology Campus Residences (On Campus)	\$425 Double occupancy 19 meals per week (full board on weekdays and half board on weekends)	
ELS NASHVILLE	Nashville Student Residence (Off Campus)	\$290 Single occupancy	BNA - Nashville International Airport \$175
ELS NEW YORK, MANHATTAN	Homestay	7 meals per week (breakfast only)	EWR - Newark Liberty International Airport \$250
			JFK - John F. Kennedy International Airport LGA - LaGuardia Airport \$215
ELS PHILADELPHIA	Living & Learning Commons (On Campus)	\$375 Double occupancy	PHL - Philadelphia International Airport \$190
ELS SAN FRANCISCO, NORTH BAY	Homestay	\$440 14 meals per week (breakfast and dinner)	SFO - San Francisco International Airport \$210
	San Rafael Student Home (Off Campus)	\$335 Double occupancy	
ELS ST. PAUL	Homestay	\$355 14 meals per week (breakfast and dinner)	MSP - Minneapolis - St. Paul International Airport \$220
	St. Paul Student Residence (Off Campus)	\$365 Single occupancy	
ELS ST. PETERSBURG	Homestay	\$385 14 meals per week (breakfast and dinner)	TPA - Tampa International Airport \$190
	Eckerd College Campus Residences (On Campus)	\$490 Double occupancy (minimum booking 8 weeks, session start dates only) 19 meals per week (full board on weekdays and half board on weekends)	

*Pricing for housing options listed is per week. Homestays are single occupancy. Check-in for accommodations is on Sundays and departure is on Saturdays. ELS may use carefully selected partners to house students with suitable Homestay providers.



AGE RANGES FOR ELS LOCATIONS

	ELS/UNIVERSITY CAMPUS	HOMESTAY	RESIDENCE
ELS CHICAGO	16+	18+*	18+
ELS CINCINNATI	16+	18+*	18+
ELS CLEVELAND	18	NA	18+
ELS HOUSTON	16+	18+	18+
ELS LOS ANGELES COUNTY	16+	16-30	17+
ELS MELBOURNE	14+	16+	18-30
ELS NASHVILLE	17+	NA	18+
ELS NEW YORK, MANHATTAN	16+	18+	NA
ELS PHILADELPHIA	17+	NA	17+
ELS SAN FRANCISCO, NORTH BAY	16+	18+*	18+
ELS ST. PAUL	16+	16+	18+
ELS ST. PETERSBURG	16+	16+	18-25

*Students aged 16 and 17 may be accepted in homestay at these locations upon approval by the Center Director, and depending on availability.





Hello
Higher Education &
Language Learning Online

What is ILSC HELLO?
ILSC HELLO Online English is offered through our partner school, ILSC. Students completing a level in ILSC HELLO may transfer to an in-person program at an ELS center. Learn about ILSC and ELS level equivalencies and explore program options: <https://www.ilsc.com/language-schools/programs/online-english>

2024 PRICING

ONLINE ENGLISH

Fees valid for registrations received by **Jun 30, 2024** for any start date in 2024.

ELECTIVE ONLINE (5 HOURS PER WEEK)	SEMI-INTENSIVE ONLINE (15 HOURS PER WEEK)	INTENSIVE ONLINE (20 HOURS PER WEEK)
<p>\$85/week CAD</p> <ul style="list-style-type: none"> English for Academic Purposes General English (English Foundation) 	<p>\$110/week CAD</p> <ul style="list-style-type: none"> English for Academic Purposes University Pathway Greystone College Pathway General English (English Foundation) 	<p>\$140/week CAD</p> <ul style="list-style-type: none"> English for Academic Purposes University Pathway Greystone College Pathway General English (English Foundation)
ALL SCHEDULES: Registration: \$120; Materials: \$10 per week		

All fees are in Canadian dollars. Intensive Online and Semi-Intensive Online students may progress to the next language level in 4 weeks or longer. Students in the Elective Online schedule will have a continuous development of their language skills. Intensive Online students can take advantage of our Progression Guarantee (conditions apply). For Semi-Intensive and Elective Online students, progression is not guaranteed. Your ability to level up will depend on your attendance, completion of homework, personal aptitude, and overall commitment to your studies.

ONLINE PROGRAMS*

	PROGRAM LENGTH	START DATES	FEES
University Pathway Program Online	Minimum 4 weeks of required academic courses ¹	Session start dates	SIO, IO tuition
Greystone College Pathway Program	4 weeks minimum	Session start dates	SIO, IO tuition
General English (Foundation) Online	1 week minimum	Every Monday**	EO, SIO, IO tuition
English for Academic Purposes Online	1 week minimum	Every Monday**	EO, SIO, IO tuition

* The availability of programs is subject to student enrollment. For certain classes and programs, you will need to take ILSC's General or Academic English Placement Test to determine that you meet the entry requirement for the course.

**Except the last week of the session.

¹ Length varies depending on progress and our pathway partners' requirements.

SESSION START DATES

2024: January 2, January 29, February 26, March 25, April 22, May 20, June 17, July 15, August 12, September 9, October 7, November 4, December 2, December 30

WWW.ELS.EDU



RECOMMENDED SCHEDULES



For Students Based in Turkiye and Eastern Europe

Where holidays land on session start dates, the session start moves ahead to the next business day. One school session is 4 weeks. December sessions are only 3 weeks long in 2024. Student intake is on session start dates for University Pathway Program Online and Greystone College Pathway Online, and every Monday for other online programs; however, students are encouraged not to start on the last Monday of the session. If you start on the 2nd or 3rd Monday of a session, you may be placed in an ongoing class.

CLASS TIME SCHEDULE 1*	MONDAY - FRIDAY	SCHEDULE OPTIONS		
ISTANBUL: 3:30-6:30 PM	Core Class (15 hours per week)	Intensive Online (20 hours per week)	Semi-Intensive Online (15 hours per week)	
ISTANBUL: 6:30-7:30 PM	Elective Class (5 hours per week)			Elective Online (5 hours per week)

**If you are based in Australia, Canada, or other countries, view our full list of schedule times [here](#). Or ask your agent or an ILSC sales representative.*



2024 START DATES



2024

JANUARY						
S	M	T	W	T	F	S
	1	2	3	4	5	6
7	8	9	10	11	12	13
14	15	16	17	18	19	20
21	22	23	24	25	26	27
28	29	30	31			

FEBRUARY						
S	M	T	W	T	F	S
				1	2	3
4	5	6	7	8	9	10
11	12	13	14	15	16	17
18	19	20	21	22	23	24
25	26	27	28	29		

MARCH						
S	M	T	W	T	F	S
					1	2
3	4	5	6	7	8	9
10	11	12	13	14	15	16
17	18	19	20	21	22	23
24	25	26	27	28	29	30
31						

APRIL						
S	M	T	W	T	F	S
	1	2	3	4	5	6
7	8	9	10	11	12	13
14	15	16	17	18	19	20
21	22	23	24	25	26	27
28	29	30				

MAY						
S	M	T	W	T	F	S
			1	2	3	4
5	6	7	8	9	10	11
12	13	14	15	16	17	18
19	20	21	22	23	24	25
26	27	28	29	30	31	

JUNE						
S	M	T	W	T	F	S
						1
2	3	4	5	6	7	8
9	10	11	12	13	14	15
16	17	18	19	20	21	22
23	24	25	26	27	28	29
30						

JULY						
S	M	T	W	T	F	S
	1	2	3	4	5	6
7	8	9	10	11	12	13
14	15	16	17	18	19	20
21	22	23	24	25	26	27
28	29	30	31			

AUGUST						
S	M	T	W	T	F	S
				1	2	3
4	5	6	7	8	9	10
11	12	13	14	15	16	17
18	19	20	21	22	23	24
25	26	27	28	29	30	31

SEPTEMBER						
S	M	T	W	T	F	S
1	2	3	4	5	6	7
8	9	10	11	12	13	14
15	16	17	18	19	20	21
22	23	24	25	26	27	28
29	30					

OCTOBER						
S	M	T	W	T	F	S
		1	2	3	4	5
6	7	8	9	10	11	12
13	14	15	16	17	18	19
20	21	22	23	24	25	26
27	28	29	30	31		

NOVEMBER						
S	M	T	W	T	F	S
					1	2
3	4	5	6	7	8	9
10	11	12	13	14	15	16
17	18	19	20	21	22	23
24	25	26	27	28	29	30

DECEMBER						
S	M	T	W	T	F	S
1	2	3	4	5	6	7
8	9	10	11	12	13	14
15	16	17	18	19	20	21
22	23	24	25	26	27	28
29	30	31				

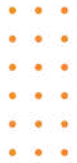
- SCHEDULE A
- SCHEDULE B
- HOLIDAYS

SCHEDULE A START CENTERS*		SCHEDULE B START CENTERS*
Cincinnati, OH	Cleveland, OH	Chicago, IL
Houston, TX	Melbourne, FL	LA County, CA
Nashville, TN	New York City, NY	St. Paul, MN
Philadelphia, PA	St. Petersburg, FL	San Francisco, North Bay, CA

2024 HOLIDAYS			
New Years Day	January 1, 2024	Juneteenth	June 19, 2024
Martin Luther King Day	January 15, 2024	Independence Day	July 4, 2024
President's Day	February 19, 2024	Labor Day	September 2, 2024
Good Friday	March 29, 2024	Thanksgiving	November 28 & 29, 2024
Memorial Day	May 27, 2024	Christmas Day	December 25, 2024

While all programs run in 4-week sessions, students can start on any Monday year-round (Tuesday if Monday is a public holiday). For the best experience we encourage students to start at the beginning of a session where possible and not to start on week four of the session.

2025 START DATES



2025

- SCHEDULE A
- SCHEDULE B
- HOLIDAYS

JANUARY						
S	M	T	W	T	F	S
29	30	31	1	2	3	4
5	6	7	8	9	10	11
12	13	14	15	16	17	18
19	20	21	22	23	24	25
26	27	28	29	30	31	

FEBRUARY						
S	M	T	W	T	F	S
						1
2	3	4	5	6	7	8
9	10	11	12	13	14	15
16	17	18	19	20	21	22
23	24	25	26	27	28	

MARCH						
S	M	T	W	T	F	S
						1
2	3	4	5	6	7	8
9	10	11	12	13	14	15
16	17	18	19	20	21	22
23	24	25	26	27	28	29
30	31					

APRIL						
S	M	T	W	T	F	S
		1	2	3	4	5
6	7	8	9	10	11	12
13	14	15	16	17	18	19
20	21	22	23	24	25	26
27	28	29	30			

MAY						
S	M	T	W	T	F	S
				1	2	3
4	5	6	7	8	9	10
11	12	13	14	15	16	17
18	19	20	21	22	23	24
25	26	27	28	29	30	31

JUNE						
S	M	T	W	T	F	S
1	2	3	4	5	6	7
8	9	10	11	12	13	14
15	16	17	18	19	20	21
22	23	24	25	26	27	28
29	30					

JULY						
S	M	T	W	T	F	S
		1	2	3	4	5
6	7	8	9	10	11	12
13	14	15	16	17	18	19
20	21	22	23	24	25	26
27	28	29	30	31		

AUGUST						
S	M	T	W	T	F	S
					1	2
3	4	5	6	7	8	9
10	11	12	13	14	15	16
17	18	19	20	21	22	23
24	25	26	27	28	29	30
31						

SEPTEMBER						
S	M	T	W	T	F	S
	1	2	3	4	5	6
7	8	9	10	11	12	13
14	15	16	17	18	19	20
21	22	23	24	25	26	27
28	29	30				

OCTOBER						
S	M	T	W	T	F	S
			1	2	3	4
5	6	7	8	9	10	11
12	13	14	15	16	17	18
19	20	21	22	23	24	25
26	27	28	29	30	31	

NOVEMBER						
S	M	T	W	T	F	S
						1
2	3	4	5	6	7	8
9	10	11	12	13	14	15
16	17	18	19	20	21	22
23	24	25	26	27	28	29
30						

DECEMBER						
S	M	T	W	T	F	S
	1	2	3	4	5	6
7	8	9	10	11	12	13
14	15	16	17	18	19	20
21	22	23	24	25	26	27
28	29	30	31			

SCHEDULE A START CENTERS*	
Cincinnati, OH	Cleveland, OH
Houston, TX	Melbourne, FL
Nashville, TN	New York City, NY
Philadelphia, PA	St. Petersburg, FL

SCHEDULE B START CENTERS*	
Chicago, IL	
LA County, CA	
St. Paul, MN	
San Francisco, North Bay, CA	

2025 HOLIDAYS			
New Years Day	January 1, 2025	Juneteenth	June 19, 2025
Martin Luther King Day	January 20, 2025	Independence Day	July 4, 2025
President's Day	February 17, 2025	Labor Day	September 1, 2025
Good Friday	April 18, 2025	Thanksgiving	November 27 & 28, 2025
Memorial Day	May 26, 2025	Christmas	December 24 & 25, 2025

While all programs run in 4-week sessions, students can start on any Monday year-round (Tuesday if Monday is a public holiday). For the best experience we encourage students to start at the beginning of a session where possible and not to start on week four of the session.



TERMS & CONDITIONS

HOUSING PRICING

Prices are subject to change.

Housing reservations are subject to availability.

If a student submits notification of visa approval to ELS fewer than 7 working days prior to arrival, ELS reserves the right to offer alternative housing, which may incur additional charges.

If a student defers the arrival day due to delayed visa processing, ELS cannot guarantee the originally booked housing, and any additional cost that may be incurred in arranging alternative housing for the student will be passed on to the student. ELS programs are offered in 4-week sessions but students may start any week. As such, prices are listed by week. All ELS homestays are single occupancy.

HOUSING PAYMENT

Full payment arrangements of a Student Residence Booking is required twenty-eight (28) days prior to Check-in. Full payment arrangements of a Homestay Booking is required fourteen (14) days prior to Check-in. Failure to provide proof of payment by the stipulated dates may result in a Room Release. In the event that a Student needs to change their originally scheduled Check-in and/or Check-out dates for any reason, the Date Change policy applies.

HOUSING CANCELLATION

We understand that circumstances may arise where a Student needs to cancel their Booking. The following cancellation provisions will determine the applicable timelines and charges that will apply to a cancelled Booking, which balance the need for the flexibility for the Student with the commitments that ELS makes with Student Residence providers and Homestay families.

CANCELLATION BEFORE CHECK-IN (STUDENT RESIDENCE)

At least 28 days' notice of cancellation request: If a Student wishes to cancel a Student Residence Booking and they give us at least twenty-eight (28) days' notice before their Check-in date, they are entitled to a full refund of the paid accommodation charges.

Less than 28 days' notice of cancellation request: If a Student wishes to cancel a Student Residence Booking and they give us less than twenty-eight (28) days' notice before their Check-in date, they must pay up to four (4) weeks' accommodation fee.

CANCELLATION BEFORE CHECK-IN (HOMESTAY)

At least 14 days' notice of cancellation request: If a Student wishes to cancel a Homestay Booking and they give us at least fourteen (14) days' notice before their Check-in date, they are entitled to a full refund of the accommodation charges.

Less than 14 days notice of cancellation request: If a Student wishes to cancel a Homestay Booking and they give us less than fourteen days (14) days' notice before their Check-in date, they must pay up to two (2) weeks' accommodation fee.

CANCELLATION AFTER CHECK-IN (STUDENT RESIDENCE & HOMESTAY)

If a Student wishes to cancel or shorten a Student Residence or Homestay Booking after Check-in:

(i) Bookings up to four (4) weeks and six (6) days (total 34 days), no refund;

(ii) Bookings more than 5 weeks (total 35 days), with four (4) weeks Written Notice, they will be entitled to a refund of the outstanding amount.

MEALS

Students staying in ELS homestays receive 14 meals a week (breakfast and dinner every day of the week) with the exception of the Manhattan center where students will receive 7 meals a week (breakfast only). ELS off-campus residences do not include meal plans. Any university on-campus residences that include meal plans are specifically noted on the application and in Knowledge Hub.





TERMS & CONDITIONS

ELS I-20 ELIGIBLE PROGRAMS

ELS Intensive and Semi-Intensive study programs are considered full-time study programs and are eligible for an I-20. The I-20 is required to apply for your F-1 student visa. Please note that the American Explorer program is not eligible for an I-20.

COVID-19 VACCINATIONS

While proof of COVID-19 vaccination is no longer required for study at most ELS locations, it is still required for students attending ELS San Francisco, North Bay at Dominican University of California. Students who plan to study at this campus are required to have proof of COVID-19 vaccination plus 1 booster or 1 shot of the new bivalent vaccine.

AIRPORT PICK-UP SERVICE

Airport pick-up fees include a maximum of 1 hour waiting time. In the event of delays exceeding 1 hour, students will be charged an additional fee at the school. In order to secure airport pick-up, ELS must receive flight details, arrival times, and drop-off location at least 7 days prior to student's arrival. No refunds will be granted for airport pick-up if flight details are not received at least 7 days prior to arrival.

CANCELLATION OF AIRPORT PICK-UP / DROP-OFF (AIRPORT TRANSFER)

If a Student wished to cancel an Airport Pick-Up or Drop-Off request, they must give at least 48 hours written notice prior to Check-In. If sufficient notice of the cancellation request is received, the Student is entitled to 100% refund of the Airport Pick-Up / Drop-Off amount. Failure to provide sufficient notice of the Airport Pick-Up / Drop-Off cancellation request will result in no refund.

STUDENT HEALTH INSURANCE

All ELS students must have medical insurance coverage while in the U.S.A. If you cannot provide evidence of sufficient coverage, in English, you must purchase the ELS Student Health Plan. The Student Health Plan is offered to ELS students at a non-refundable fee of \$50 per week. You will receive additional information about the Student Health Plan when you arrive at the center.

